

Brookline

# BALDWIN SCHOOL EXPANSION

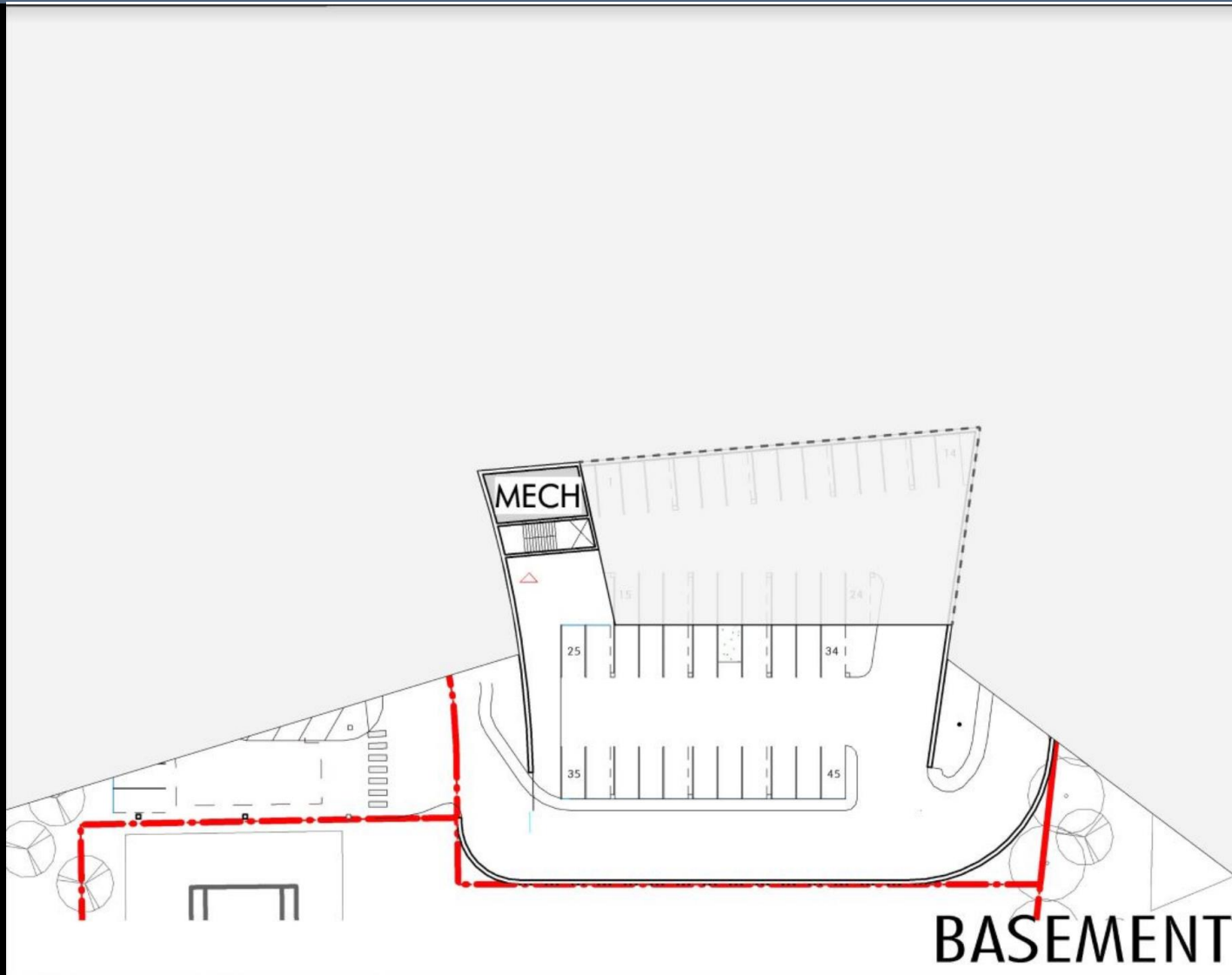
School Building Committee  
January 17, 2019



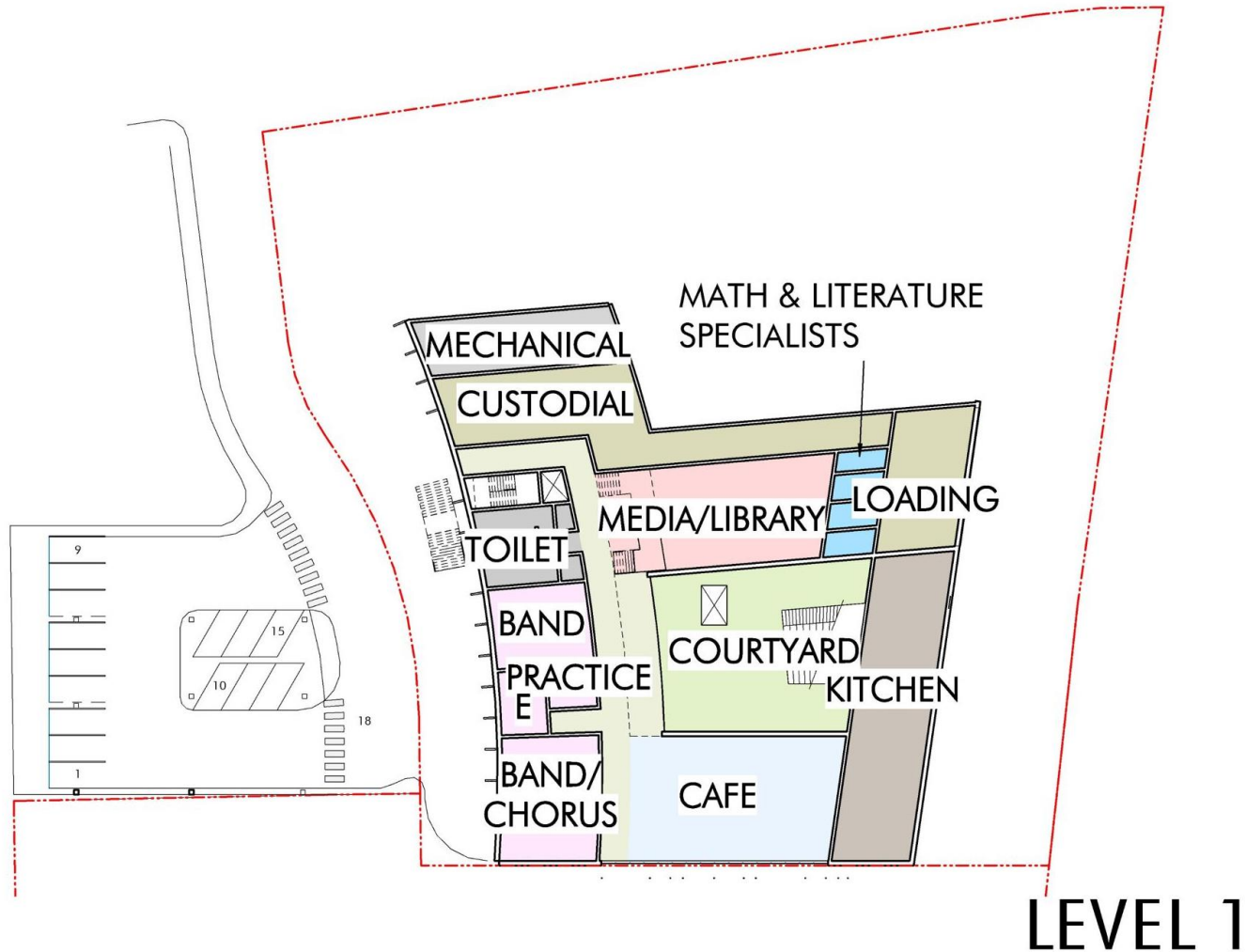
# Agenda

1. Approval of Minutes
2. Schematic Design Schedule Review
3. Design Recap and Activity Update
4. Fossil Free Design Update
5. Parking Options
6. Upcoming Meetings

# Floor Plans



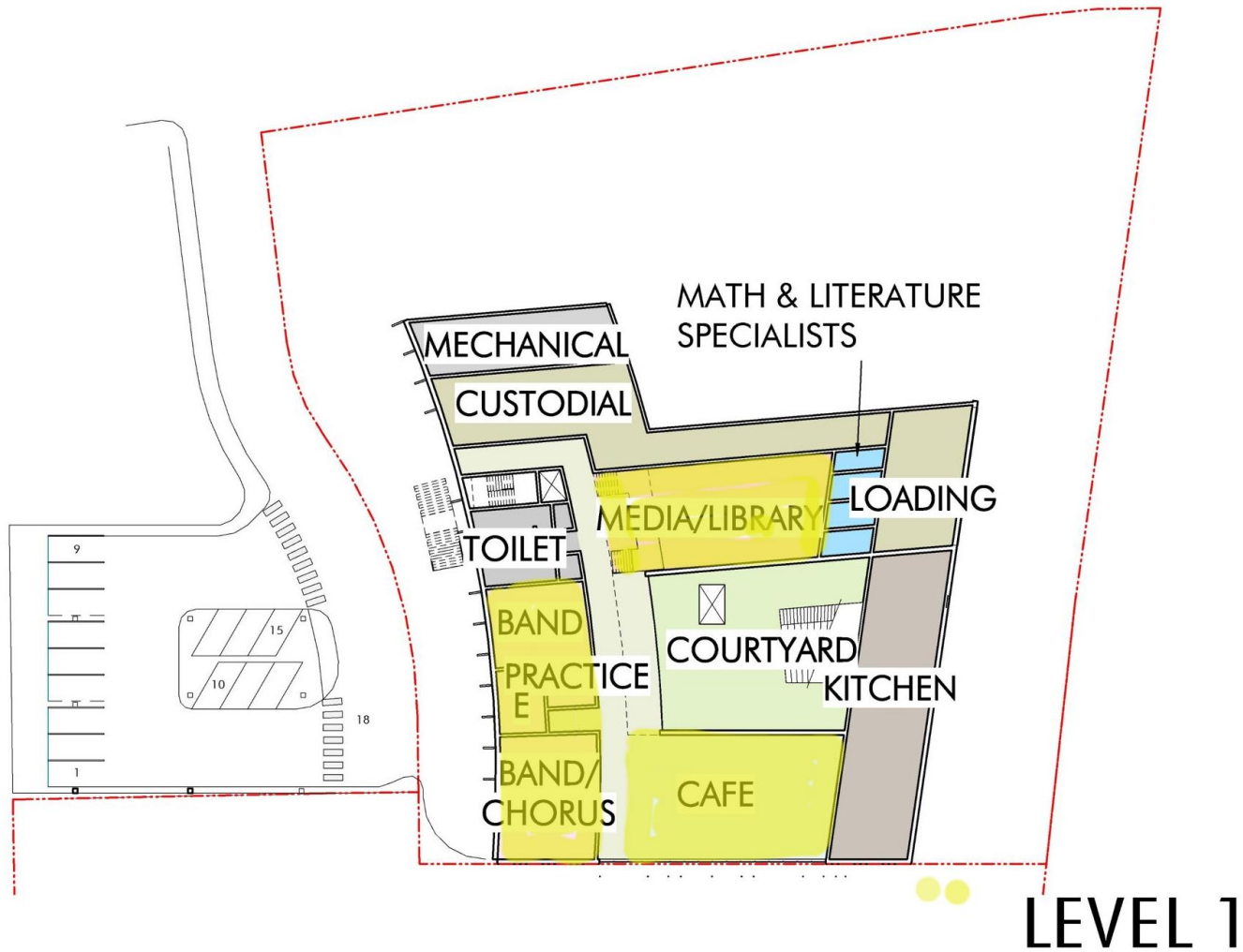
# Floor Plans



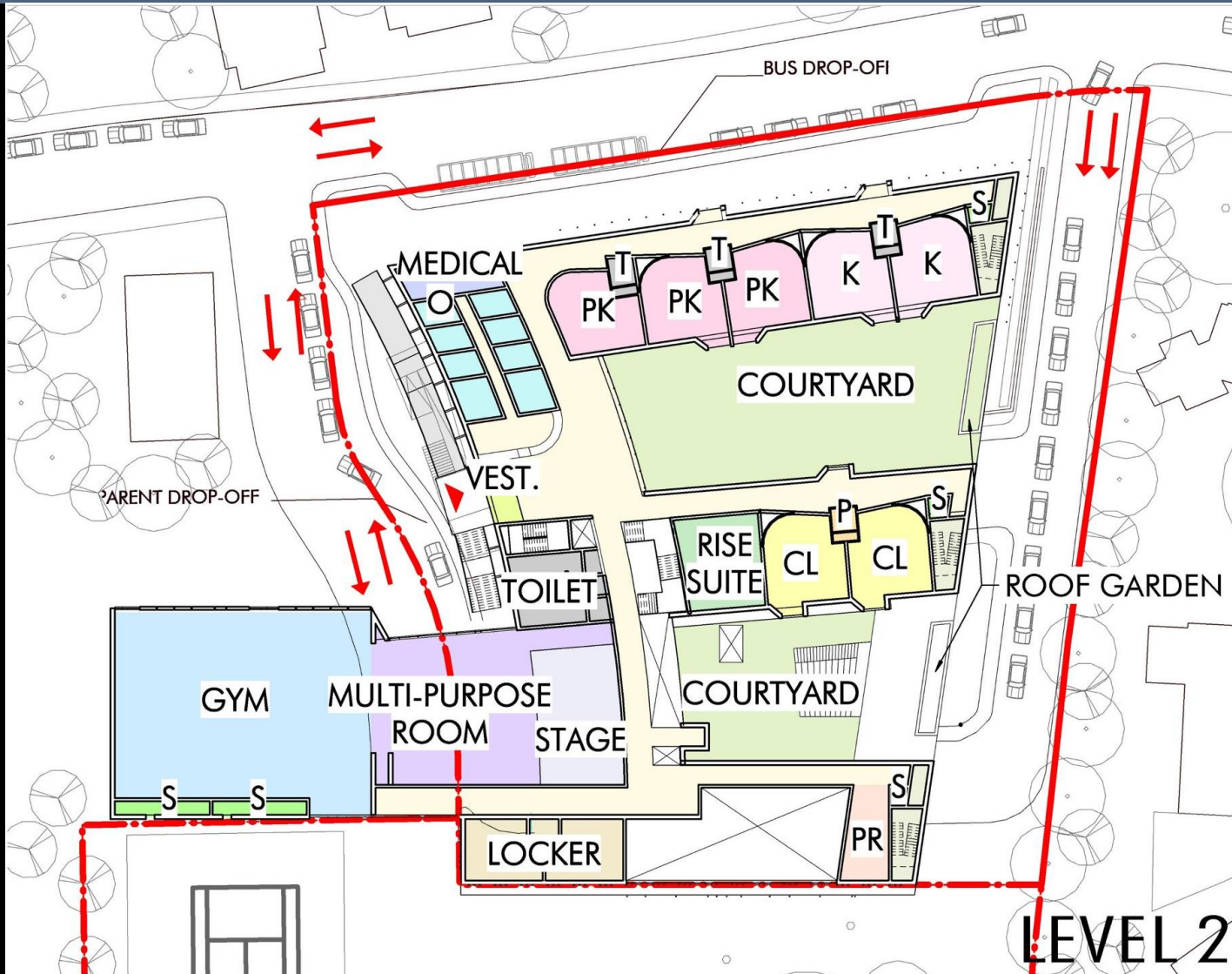
LEVEL 1



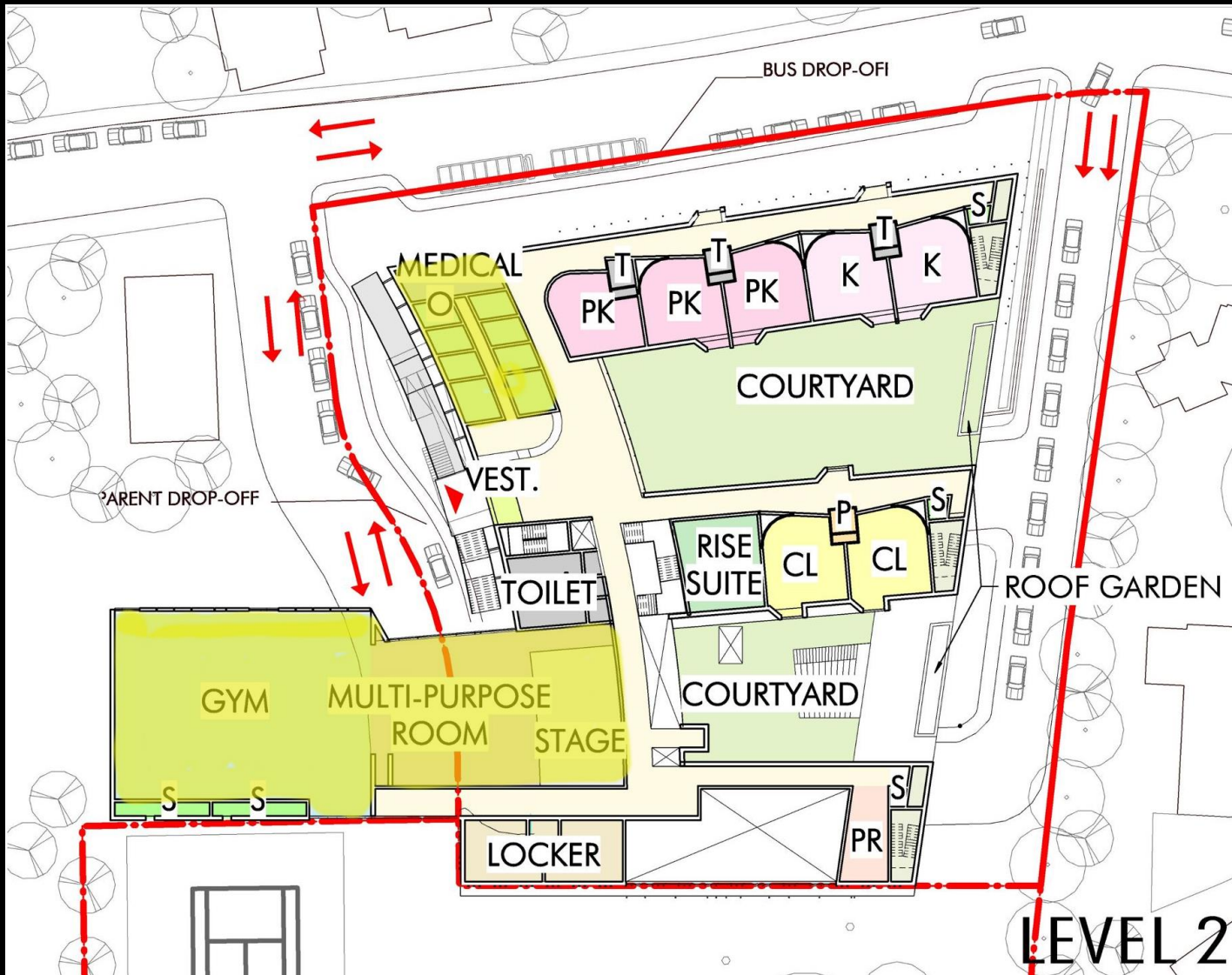
# Floor Plans



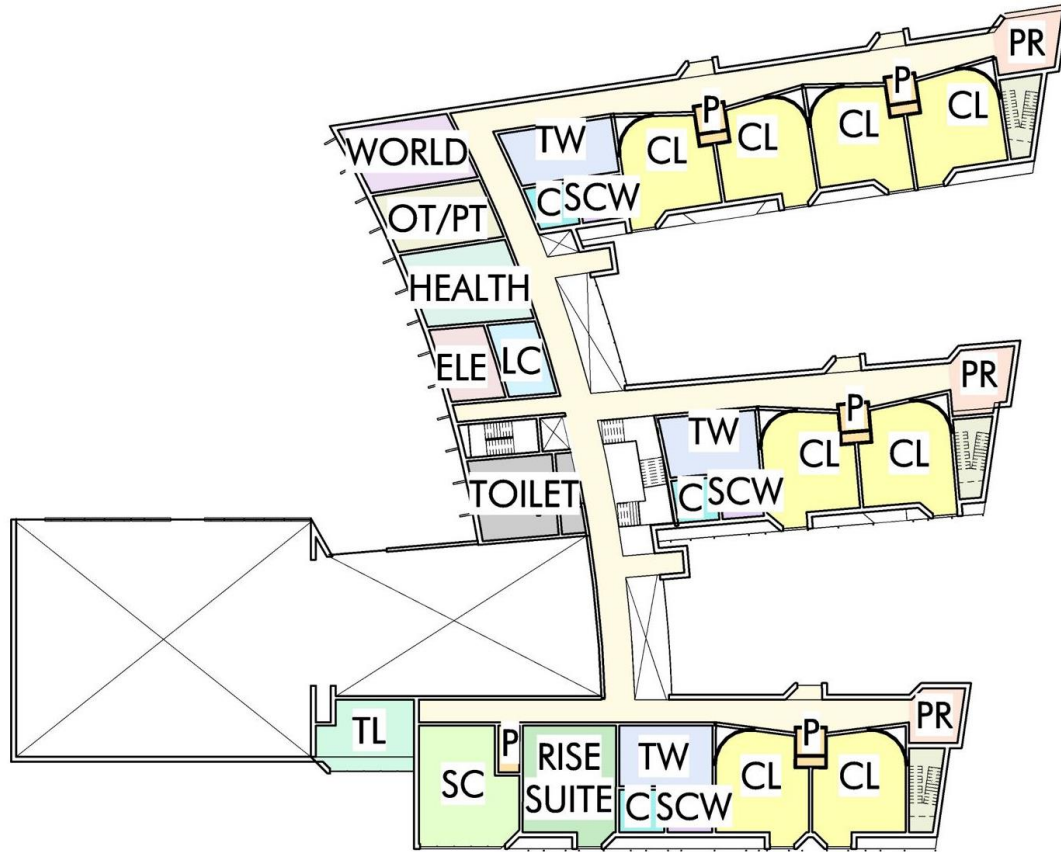
# Floor Plans



# Floor Plans



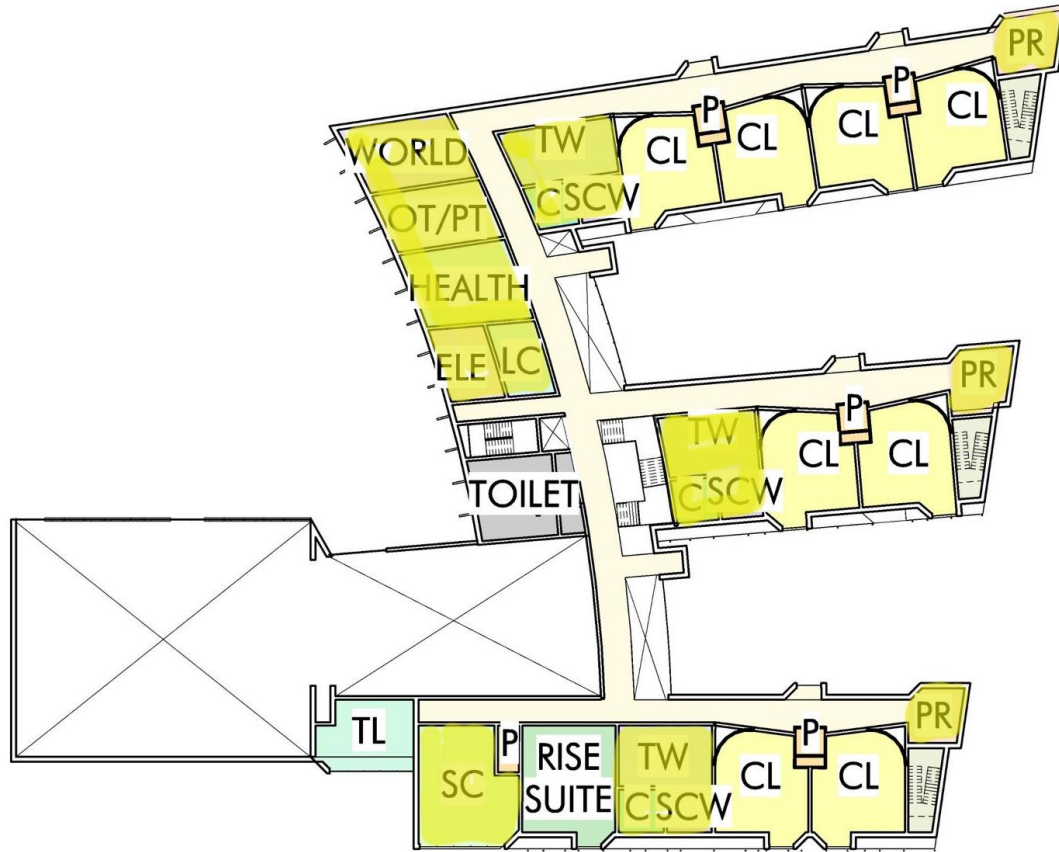
# Floor Plans



LEVEL 3

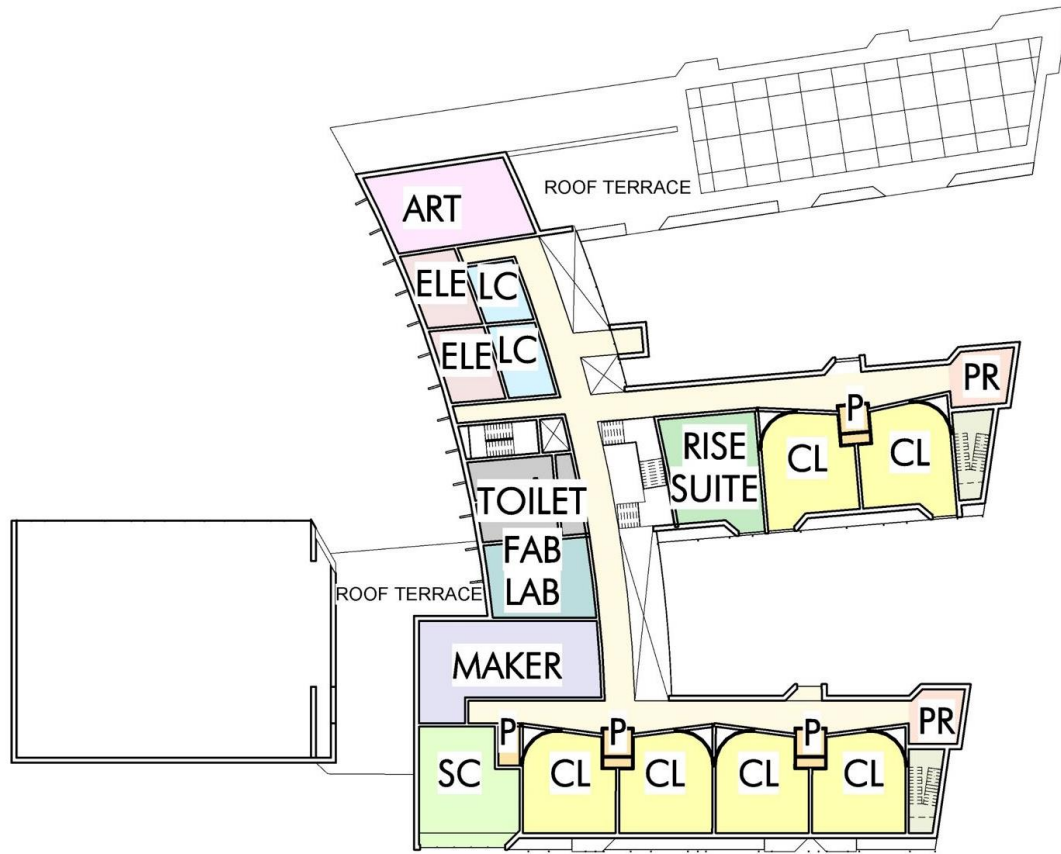


# Floor Plans



LEVEL 3

# Floor Plans



LEVEL 4

# Floor Plans



LEVEL 4



# Baldwin Parking Plan Options

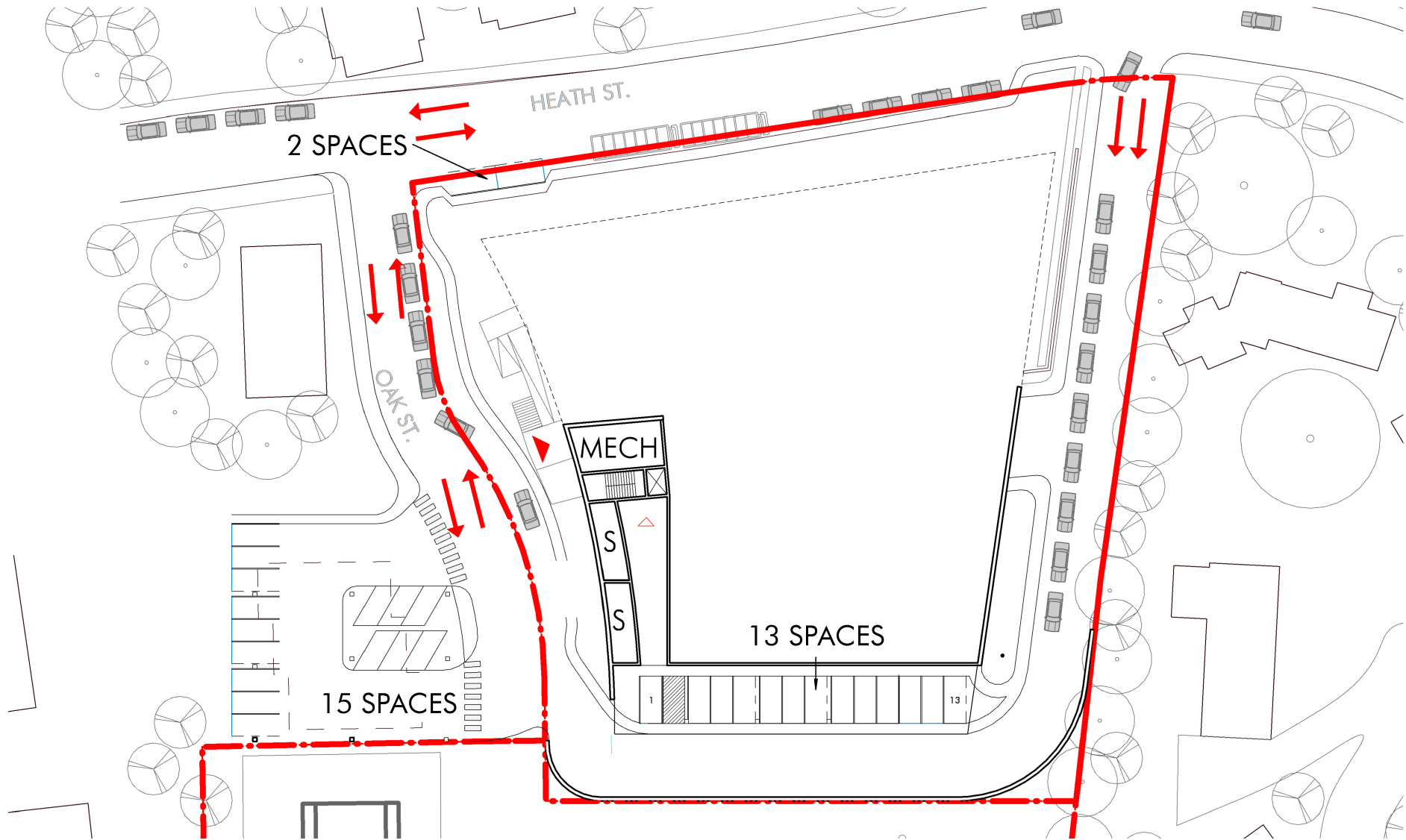


	<b>Staff</b>	<b># of Staff Parking Spaces to Plan For</b>
<b>Planned</b>	86	78 (90% of staff)

	<b>Total # of Staff Parking Spaces Needed</b>	<b># of Staff Parking Spaces on School Property</b>	<b># of Staff Parking Spaces on Town Streets</b>	<b>Visitor Parking on School Property</b>	<b>Estimated Longest Walk for staff (mi)</b>
Option 1	78	13	65	15	0.6
Option 2	78	25	53	15	0.5
Option 3	78	45	33	15	0.4

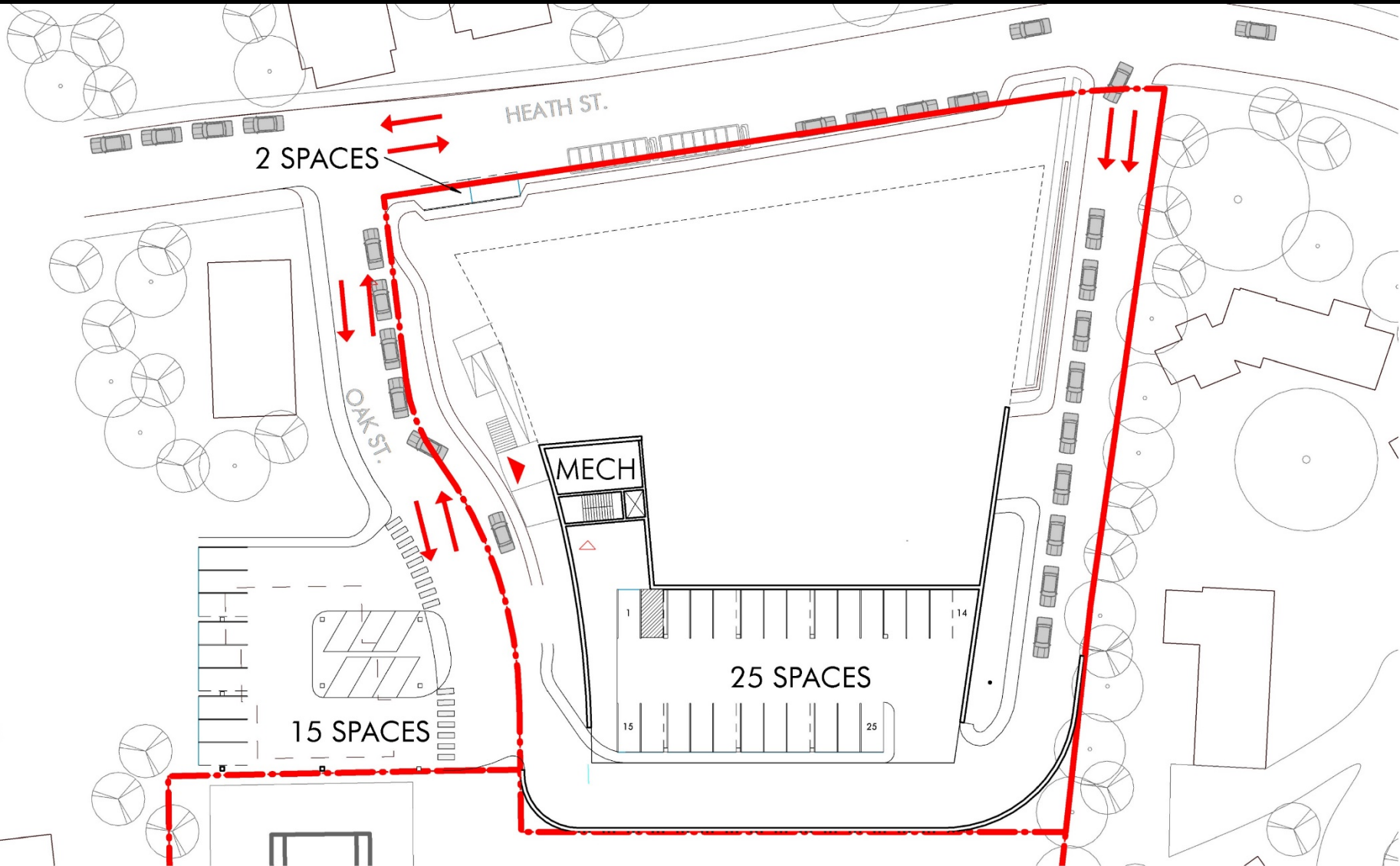


# Parking Options



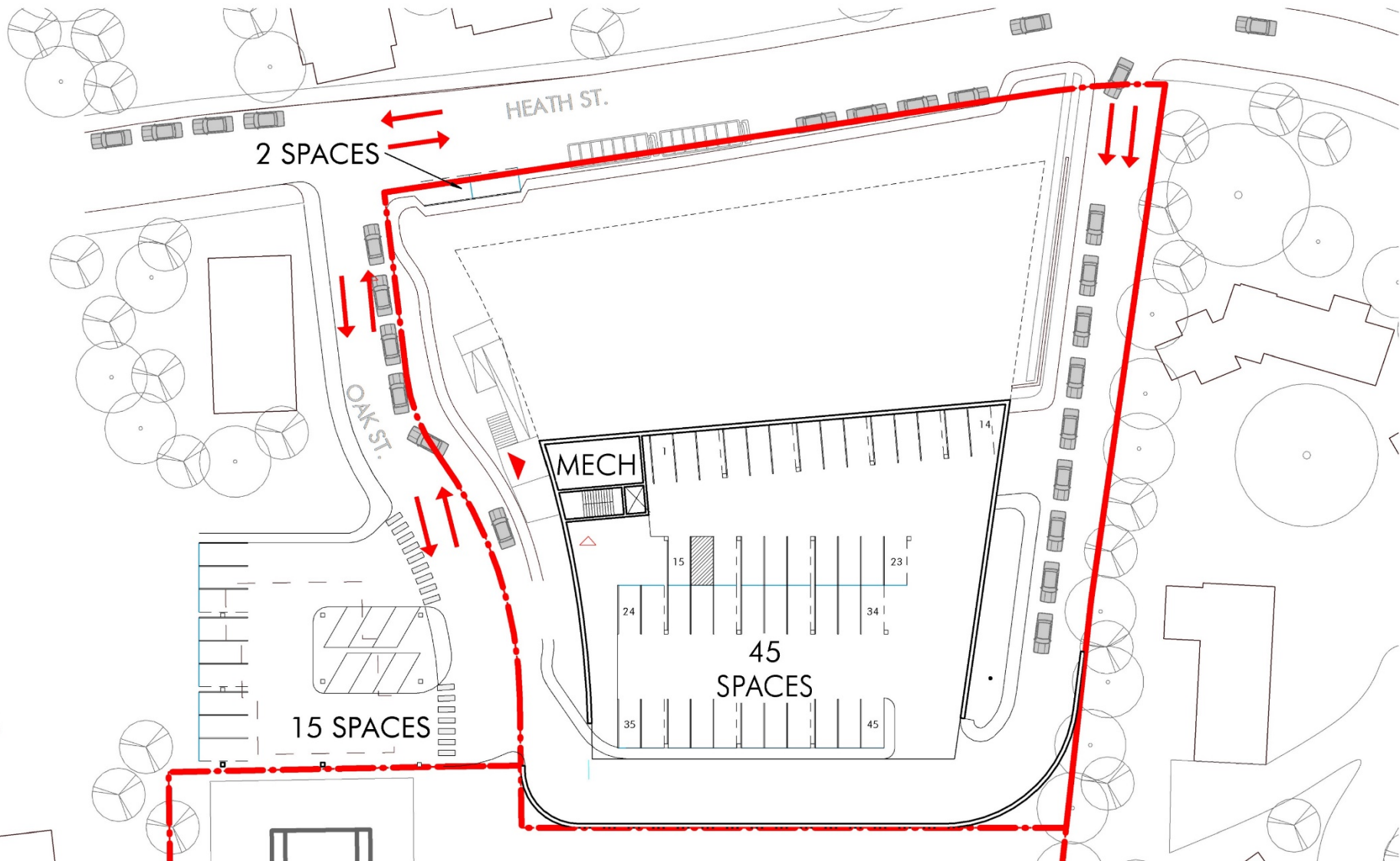
**PARKING OPTION 1 = 2 + 15 + 13 = 30 SPACES**

# Parking Options



**PARKING OPTION 2 = 2 + 15 + 25 = 42 SPACES**

# Parking Options



PARKING OPTION 3 = 2 + 15 + 45 = 62 SPACES





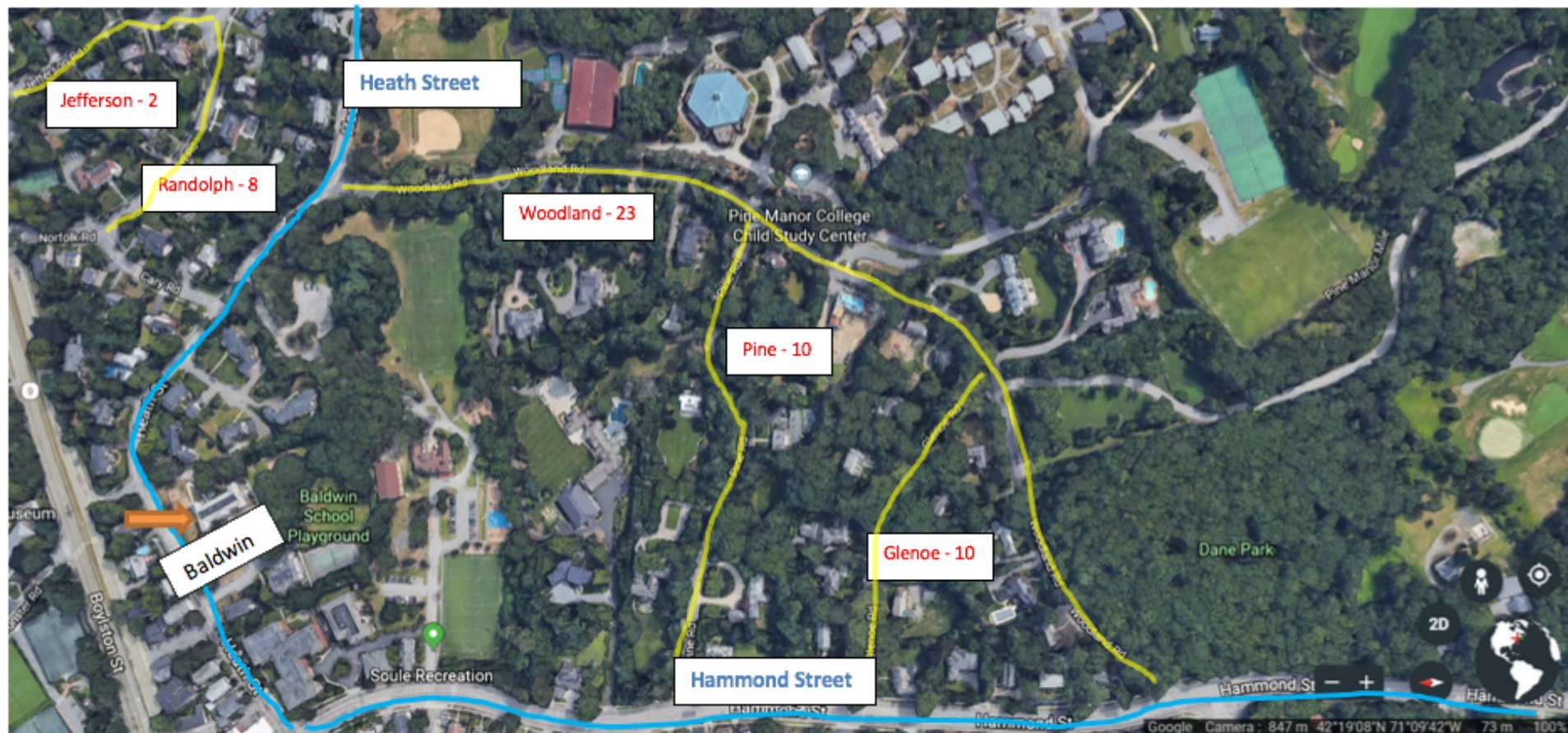
# Baldwin School

1/16/19 – Parking  
 Proposed for School Committee  
 and Transportation Board

**Option 1**  
 86 Staff Projected  
 78 Parking Spaces Needed  
 (90% of staff)  
 13 Parking Lots Spaces  
 65 On Street Spaces Requested

- 65 on-street spaces**
- 25 Woodland Rd
  - 11 Randolph Rd
  - 11 Pine Rd
  - 11 Glencoe Rd
  - 4 Jefferson Rd
  - 3 Cary Rd





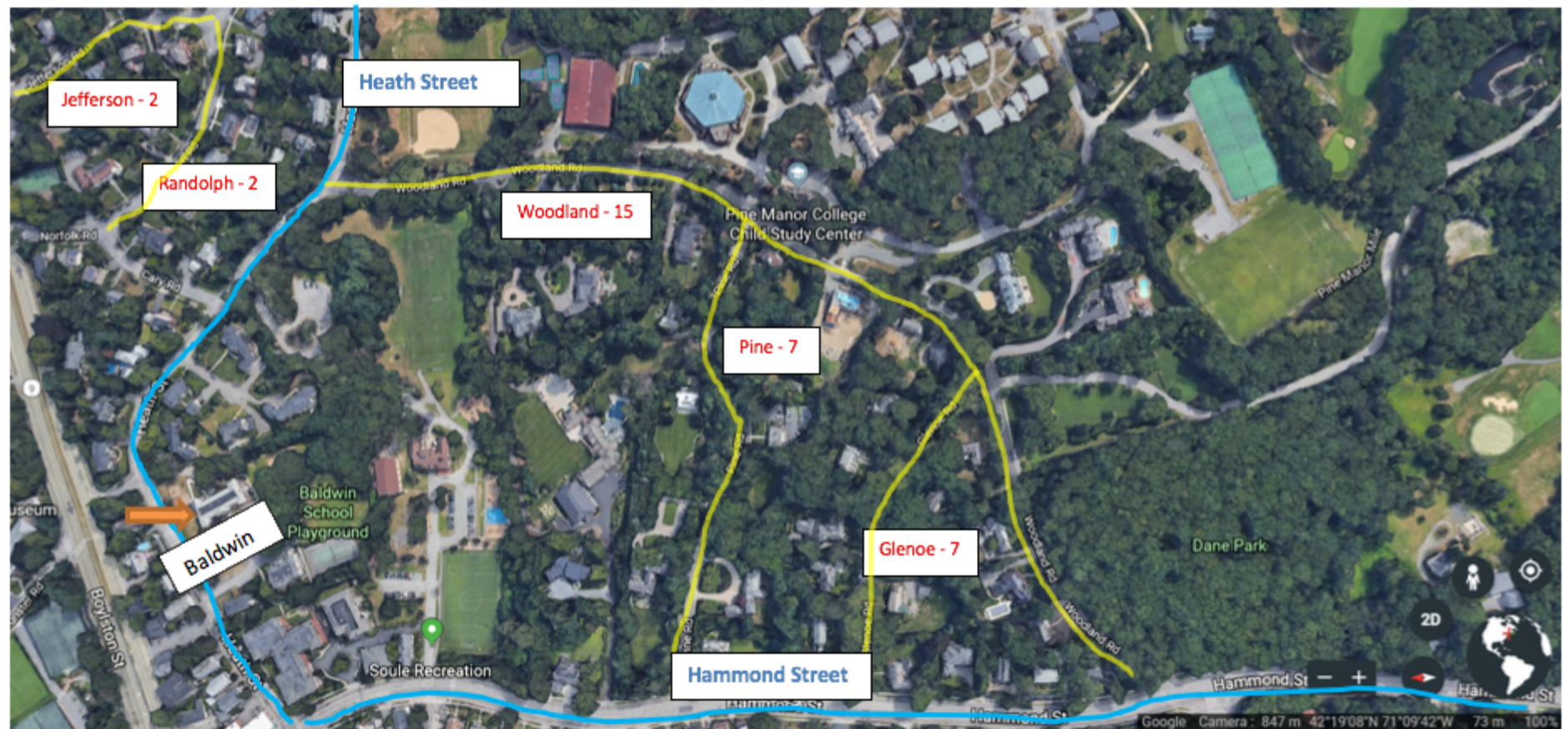
1/16/2019 – Parking  
 Proposed for School  
 Committee and  
 Transportation Board

### Option 2

78 Parking Spaces Needed  
 25 Parking Lots Spaces  
 53 On Street Spaces Requested

- 53 on-street spaces**
- 23 Woodland Rd
  - 8 Randolph Rd
  - 10 Pine Rd
  - 10 Glencoe Rd
  - 2 Jefferson Rd





1/16/19 – Parking

Proposed for School Committee  
and Transportation Board

### Option 3

**86 Staff Projected**  
**78 Parking Spaces Needed**  
**(90% of staff)**

**45 Parking Lots Spaces**  
**33 On Street Spaces Requested**

**33 on-street spaces**

- 15 Woodland Rd**
- 2 Randolph Rd**
- 7 Pine Rd**
- 7 Glenoe Rd**
- 2 Jefferson Rd**



# Baldwin Parking Plan Options



	Design Presented at Town Meeting – December 2018			Updated and Refined Design – January 2019		
	# of Below Grade Parking Spaces	Total Project Cost Estimate	Marginal Cost	# of Below Grade Parking Spaces	Schematic Design – Revised Project Cost Estimate	Marginal Cost
Option 1	10 spaces	\$72 – 76 M	\$0	13	\$72 - 76 M	\$ 0
Option 2	N/A	N/A	N/A	25 spaces	\$75.3 – 79.3 M	\$3.3 M
Option 3	40 spaces	\$78 – 82 M	\$6 M	45 spaces	\$77.6 – 81.6 M	\$5.6 M

	Total # of Staff Parking Spaces Needed	# of Staff Parking Spaces on School Property	# of Staff Parking Spaces on Town Streets	Estimated Longest Walk for staff (mi)
Option 1	78	13	65	0.6
Option 2	78	25	53	0.5
Option 3	78	45	33	0.5



Option 2 Recommended by School Building Committee and School Committee

# PSB Staff Parking Plans

	Total # of Staff Parking Spaces	# of Staff Parking Spaces on School Property	# of Staff Parking Spaces on Town Streets	Estimated Longest Walk for staff (mi)	% of Staff Parking On-Site	% of Staff Parking on Town Streets
<b>Brookline High</b>	225	25	200	0.6	11%	89%
<b>Baker</b>	132	64	68	0.5	48%	52%
<b>Coolidge Corner</b>	175	65	110	0.5	37%	63%
<b>Driscoll</b>	105	52	53	0.3	50%	50%
<b>Heath</b>	68	32	36	0.3	47%	53%
<b>Lawrence</b>	102	0	102	0.3	0%	100%
<b>Lincoln</b>	102	69	33	0.2	68%	32%
<b>Pierce</b>	135	85*	50	0.2	63%	37%
<b>Runkle</b>	120	0	120	0.3	0%	100%
<b>BEEP @ Lynch</b>	26	20	6	N/A	77%	23%
<b>BEEP @ Putterham</b>	40	0	40	0.4	0%	100%
<b>Baldwin - Option 1</b>	<b>78</b>	<b>13</b>	<b>65</b>	<b>0.6</b>	<b>17%</b>	<b>83%</b>
<b>Baldwin - Option 2</b>	<b>78</b>	<b>25</b>	<b>53</b>	<b>0.5</b>	<b>32%</b>	<b>68%</b>
<b>Baldwin - Option 3</b>	<b>78</b>	<b>45</b>	<b>33</b>	<b>0.5</b>	<b>58%</b>	<b>42%</b>





# On-site Parking at PSB Schools

	Staff	Families	School Day Visitors
<b>Baker</b>	On Site + Street	None	Limited to Circle
<b>Coolidge Corner</b>	On Site + Street	None	Limited to Circle
<b>Driscoll</b>	On Site + Street	None	None
<b>Heath</b>	On Site + Street	None	Limited to small off street lot
<b>Lawrence</b>	Street	None	None
<b>Lincoln</b>	On Site + Street	None	Limited to Circle
<b>Pierce</b>	On Site + Street	None	None
<b>Runkle</b>	Street	None	None
<b>Brookline High</b>	On Site + Street	None	None
<b>BEEP</b>	On Site + Street	None	None
<b>Baldwin (Proposed)</b>	<b>On Site + Street</b>	<b>17 spaces available on-site during drop off</b>	<b>17 spaces On-Site</b>